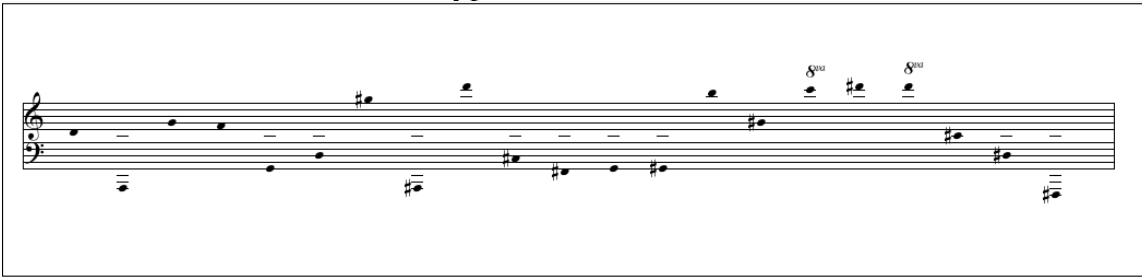
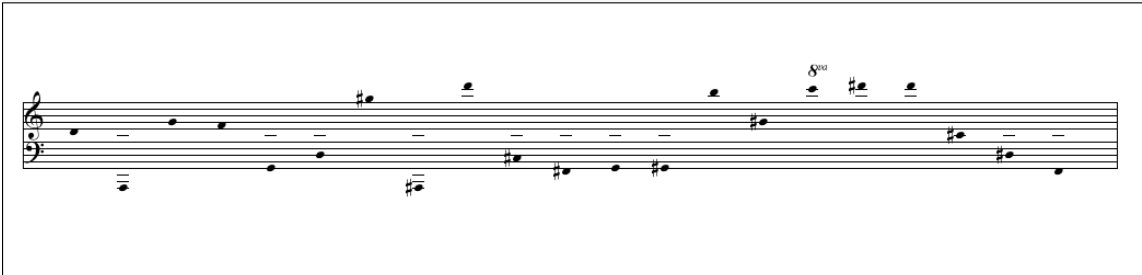


Typical Notation Sets



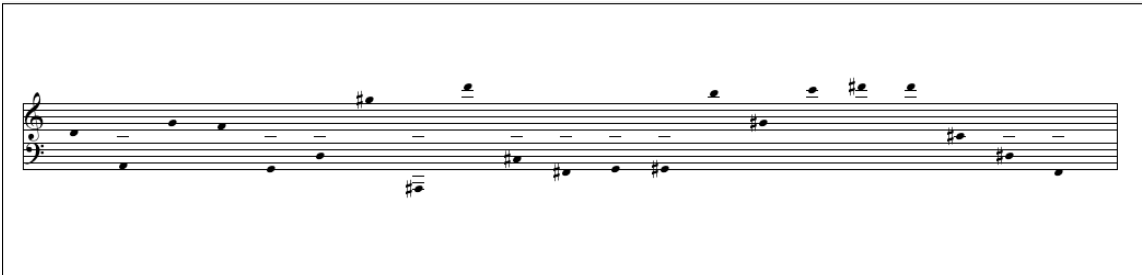
A musical score for two staves (treble and bass clef) showing a sequence of notes. The notes are mostly quarter notes with stems pointing down. There are two instances of an octave sign (8va) above notes in the treble staff, indicating an octave transposition.

Original room resonances



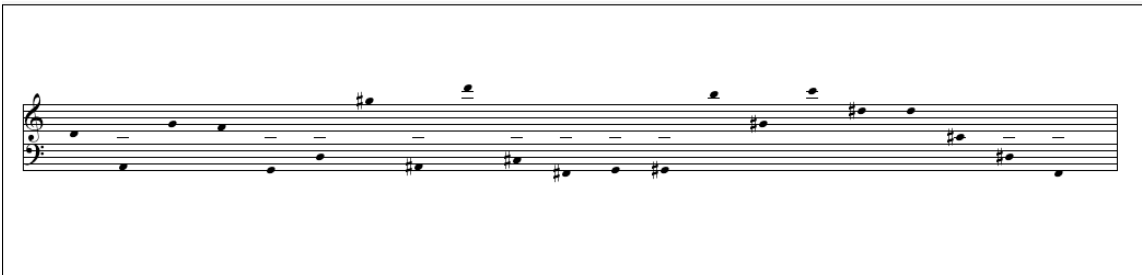
A musical score for two staves, similar to the original but with a different arrangement of notes and stems, representing the first fold.

Fold 1



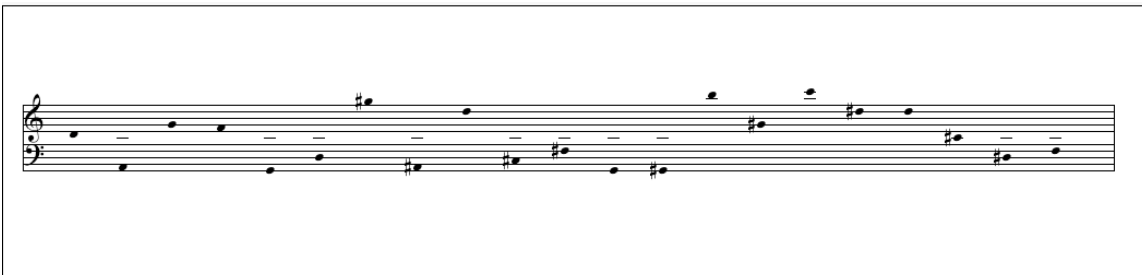
A musical score for two staves, showing a further transformation of the original notation, representing the second fold.

Fold 2



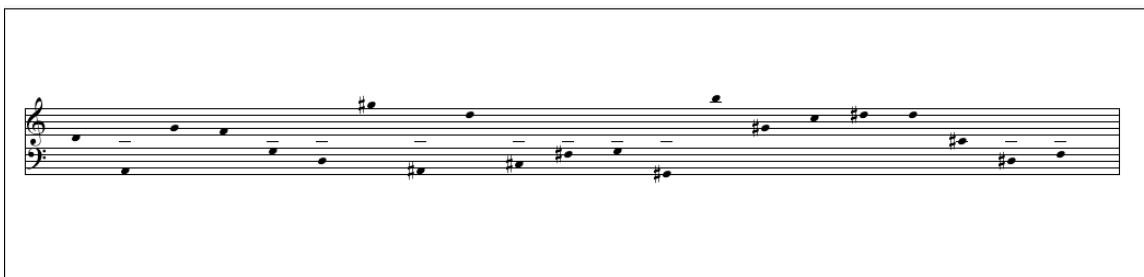
A musical score for two staves, showing a further transformation of the original notation, representing the third fold.

Fold 3

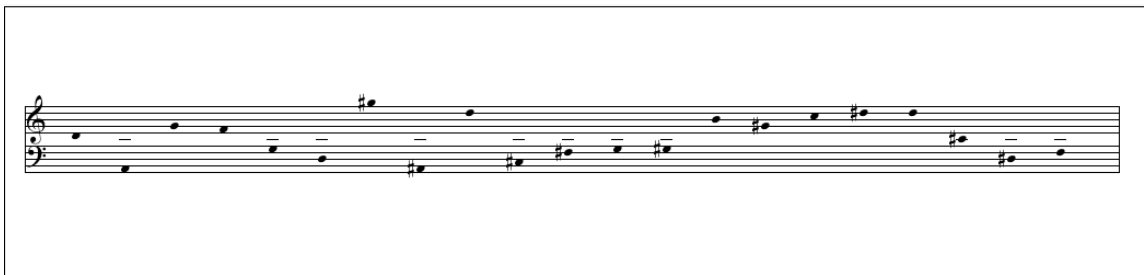


A musical score for two staves, showing a further transformation of the original notation, representing the fourth fold.

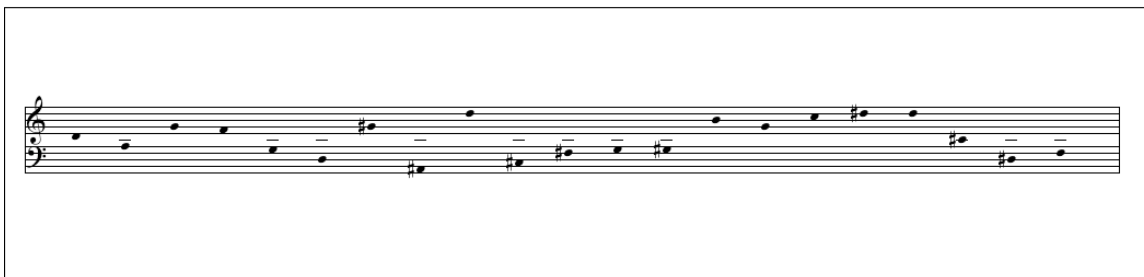
Fold 4



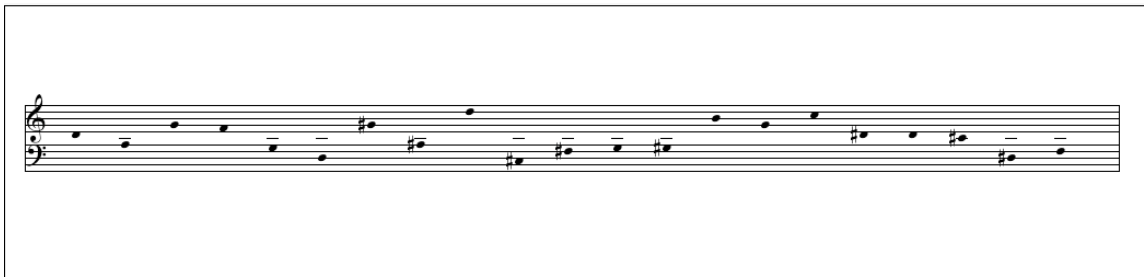
Fold 5



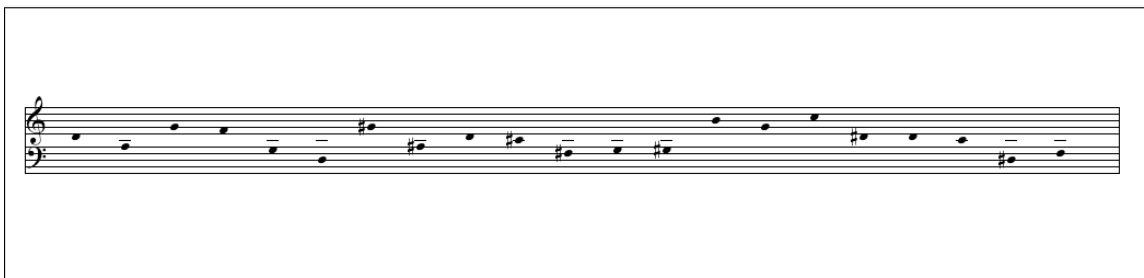
Fold 6



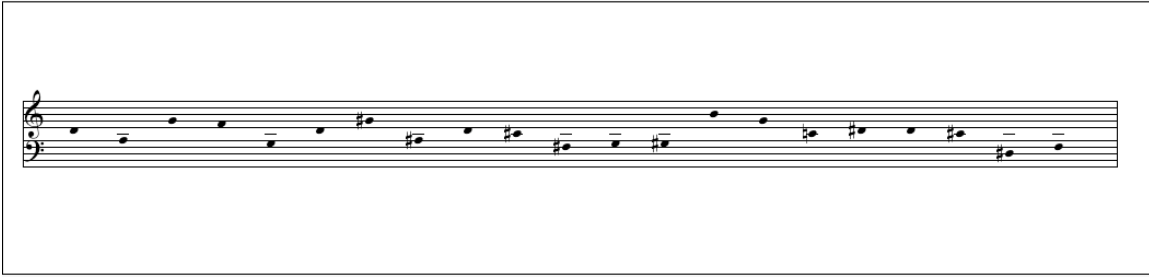
Fold 7



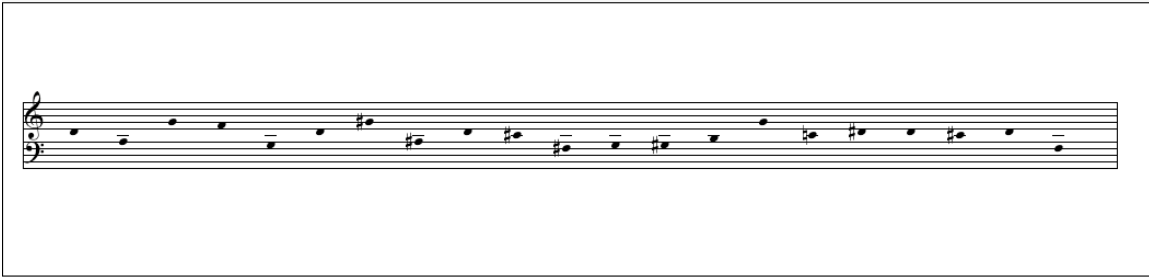
Fold 8



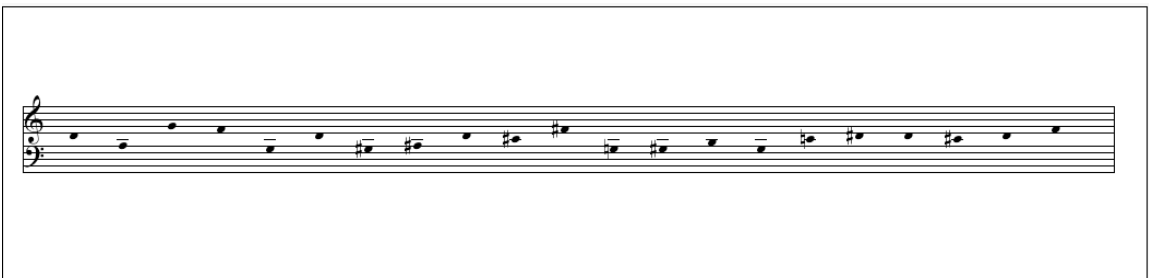
Fold 9



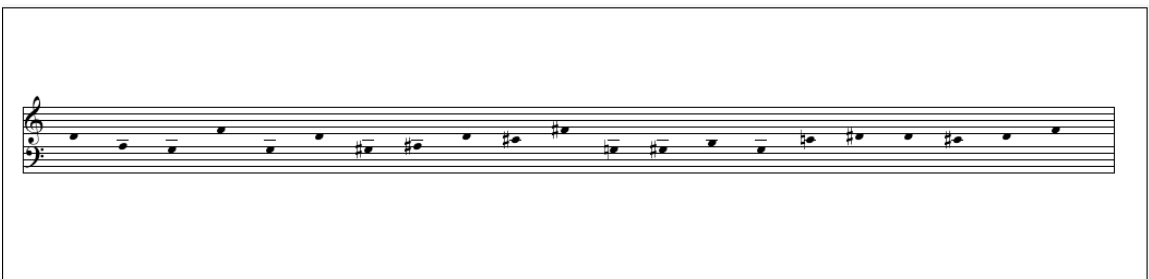
Fold 10



Fold 11



Fold 12



Fold 13

Feedback Nulling Filterbank

